

Manuscript Organization

The manuscript should be divided as: Title page, abstract and the main text. The text may be subdivided further according to the areas to be discussed. After the text follows the Experimental and Reference sections. The first page should contain the title, the authors' names, with an asterisk to mark the name of the principal author.

- **Conflict of Interest:** Financial contributions to the work being reported should be clearly acknowledged, as should any potential conflict of interest.
- **Abstract:** The abstract should not exceed 250 words and it should condense the essential features of the article.
- **Key Words:** Authors must supply up to eight key words along with their manuscript.
- **Text:** The main text should begin on a separate page and it may be subdivided into separate sections. In the text, references should be cited by author and year (e.g. Hammer, 1994; Hammer and Sjöqvist, 1995; Hammer et al., 1993). Acknowledgements should be kept to a minimum.
- **Reference List:** The reference list should be listed in alphabetical order. Full title of the cited article should be listed and start-ending page number is needed. (See details in the "Reference" section in page 6)

Tables

- Data Tables should be submitted in Microsoft Excel or in Microsoft Word table format.
- Each table should include a title/caption explaining what the table shows. Detailed legends may then follow.
- Tables should be given on separate pages with indications on the left hand margin to the text, as to the appropriate placement of the tables.
- Tables should not contain vertical rules.
- Columns and rows of data should be made visibly distinct by ensuring the borders of each cell display as black lines.
- Tables should be numbered consecutively in order of their citation in the body of the text, with Arabic numerals.
- If a reference is cited in both the table and text, insert a lettered footnote in the table to refer to the numbered reference in the text.
- Tabular data provided as additional files can be submitted as an Excel spreadsheet.

Figures / Illustrations

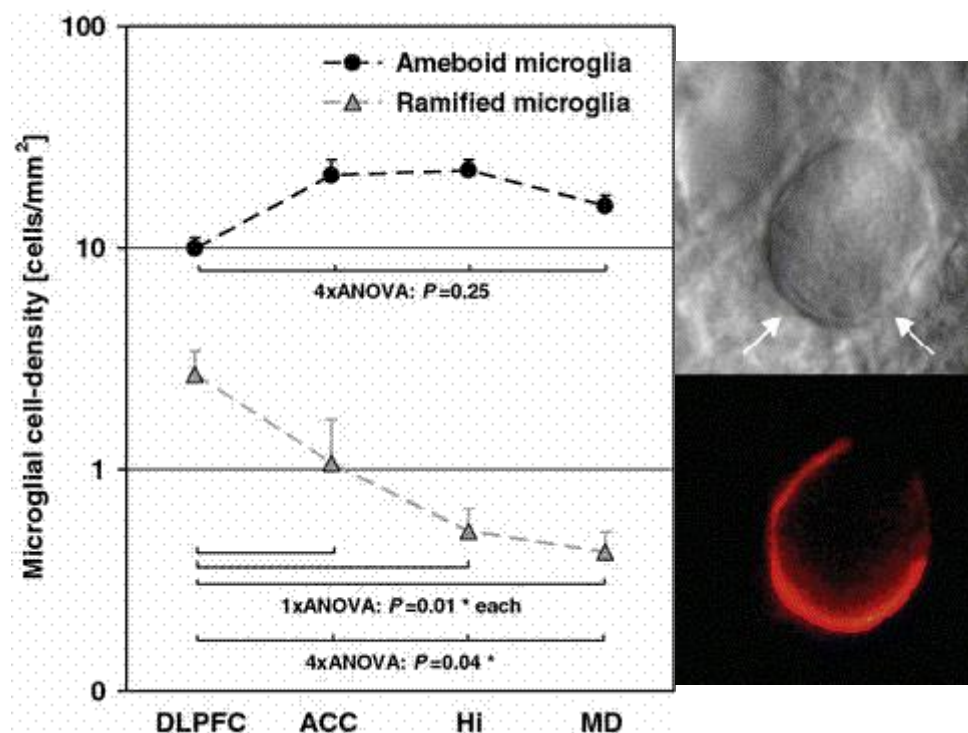
For the best quality final product, it is highly recommended that you submit all of your artwork – photographs, line drawings, etc. – in an electronic format. Your art will then be produced to the highest standards with the greatest accuracy to detail. The published work will directly reflect the quality of the artwork provided.

Electronic Figure Submission

- Supply all figures electronically.
- Indicate what graphics program was used to create the artwork.
- For vector graphics, the preferred format is EPS; for halftones, please use TIFF format. MS Office files are also acceptable.
- Vector graphics containing fonts must have the fonts embedded in the files.
- Name your figure files with "Fig" and the figure number, e.g., Fig1.eps.

Line Art

- Definition: Black and white graphic with no shading.
- Do not use faint lines and/or lettering and check that all lines and lettering within the figures are legible at final size.
- All lines should be at least 0.1 mm (0.3 pt) wide.
- Line drawings should have a minimum resolution of 1200 dpi.
- Vector graphics containing fonts must have the fonts embedded in the files.



Halftone Art

- Definition: Photographs, drawings, or paintings with fine shading, etc.
- If any magnification is used in the photographs, indicate this by using scale bars within the figures themselves.
- Halftones should have a minimum resolution of 300 dpi.

Combination Art

- Definition: a combination of halftone and line art, e.g., halftones containing line drawing, extensive lettering, color diagrams, etc.
- Combination artwork should have a minimum resolution of 600 dpi.

Color Art

- Color art is free of charge for online publication.
- If black and white will be shown in the print version, make sure that the main information will still be visible. Many colors are not distinguishable from one another when converted to black and white. A simple way to check this is to make a xerographic copy to see if the necessary distinctions between the different colors are still apparent.
- If the figures will be printed in black and white, do not refer to color in the captions.
- Color illustrations should be submitted as RGB (8 bits per channel).

Figure Lettering

- To add lettering, it is best to use Helvetica or Arial (sans serif fonts).
- Keep lettering consistently sized throughout your final-sized artwork, usually about 2–3 mm (8–12 pt).
- Variance of type size within an illustration should be minimal, e.g., do not use 8-pt type on an axis and 20-pt type for the axis label.
- Avoid effects such as shading, outline letters, etc.
- Do not include titles or captions within your illustrations.

Figure Numbering

- All figures are to be numbered using Arabic numerals.
- Figures should always be cited in text in consecutive numerical order.
- Figure parts should be denoted by lowercase letters (a, b, c, etc.).
- If an appendix appears in your article and it contains one or more figures, continue the consecutive numbering of the main text. Do not number the appendix figures, "A1, A2, A3, etc."

Figure Captions

- Each figure should have a concise caption describing accurately what the figure depicts.
- Figure captions begin with the term Fig. in bold type, followed by the figure number, also in bold type.
- No punctuation is to be included after the number, nor is any punctuation to be placed at the end of the caption.

- Identify all elements found in the figure in the figure caption; and use boxes, circles, etc., as coordinate points in graphs.
- Identify previously published material by giving the original source in the form of a reference citation at the end of the figure caption.

Figure Placement and Size

- When preparing your figures, size figures to fit in the column width.
- The figures should be 39 mm, 84 mm, 129 mm, or 174 mm wide and not higher than 234 mm.

Chemical Structures:

Chemical structures must be prepared according to the guidelines below.

- Structures should be prepared using a suitable drawing program e.g. ChemDraw and provided as separate file, submitted both on disk and in printed formats.
- Numbers in bold should identify all chemical structure. If a name is also used to describe the compound, the associated number in bold should be in parenthesis, e.g. "Compound (1)".

Structure Drawing Preferences:

[As according to the American Chemical Society(ACS) style sheet]

Drawing Settings

Chain angle: 120°

Bond spacing: 18% of width

Fixed length: 14.4 pt (0.500cm, 0.2in)Under the Preference Choose:

Bold width: 2.0 pt (0.071cm, 0.0278in)Units: points

Line width: 0.6 pt (0.021cm, 0.0084in)Tolerances: 3 pixels

Margin width: 1.6 pt (0.096cm) Under Page Setup Use:

Harsh spacing: 2.5 pt (0.088cm, Paper: US letter

0.0347in)

Text settings:

Font: Times New Roman / Helvetica

Size: 10pt

Scale: 100%

Experimental Section

- Experimental descriptions must be as concise as possible.
- The title of an experiment should include the chemical name and compound number and use of chemical formulas and standard abbreviations is encouraged.
- Sufficient spectral data such as NMR data should be included in the Experimental Section for all new compounds reported.

- Adequate evidence to establish the degree of purity must be provided for all target.

References Section

Citation in text

In the text, references should be cited by author and year (e.g. Hammer, 1994; Hammer and Sj?qvist, 1995; Hammer et al., 1993).

Example:

There are many different protein-protein interaction databases such as BioGRID (Chris et al., 2006), DIP (Loannis et al., 2001), BIND (Alfarano et al., 2005), MINT (Zanzoni et al., 2002), and MIPS (Mewes et al., 2004).

References List

The list of references should only include works that are cited in the text and that have been published or accepted for publication. Personal communications should only be mentioned in the text. **The reference list should be listed in alphabetical order.**

(1)Journal articles

Name(s) and initial(s) of all authors. year. title of article. Title of journal. Volume number, Page numbers.

Example1:

Grissom, L.E., Harcke, H.T. 1997. Ultrasonography of nondevelopmental dysplasia of the hips. *Pediatr Radiol* 27, 70-74.

Example2:

Yang, F.Z., Zhu, Y.Y. 2004. An efficient method for similarity search on quantitative transaction data. *Journal of Computer Research and Development (in Chinese)* 41, 361-368.

(2)Single contributions in a book

Name(s) and initial(s) of all authors; year; title of article; editor(s); title of book; edition; volume number; publisher; place of publication; page numbers:

Example:

Buchanan, S., Michel, H. 1990. Investigation of quinone reduction in *Rhodopseudomonas viridis* by FTIR difference spectroscopy and X-ray diffraction analysis. In: Michel-Beyerle M-E (ed) *Springer series in biophysics*, Vol 6. Springer, Berlin, Heidelberg New York, pp 75–85.

(3)Book

Name and initial(s) of all authors; year; title; publisher; place of publication:

Example:

Miller, O.J., Therman, E. 2001. Human chromosomes. Springer, Berlin Heidelberg New York

(4)Web pages

1. Article by DOI (with page numbers):

Slifka, M.K., Whitton, J.L. 2000. Clinical implications of dysregulated cytokine production. J Mol Med 78, 74–80. doi: 10.1007/s001090000086

2. Article by DOI (before issue publication with page numbers):

Slifka, M.K., Whitton, J.L. 2000. Clinical implications of dysregulated cytokine production. J Mol Med (in press). doi: 10.1007/s001090000086

3. Article in electronic journal by DOI (no paginated version):

Slifka, M.K., Whitton, J.L. (2000) Clinical implications of dysregulated cytokine production. Dig J Mol Med. doi: 10.1007/s801090000086

Tips for References list:

- The family name of the author should be in full name;
- The given name and middle name (if has) of the author should be abbreviated to the first letter in capitalization with a dot; No space between the two letters.
- Both the family name and the given name follows a comma(,);
- Full title of the cited article is needed;
- **The reference list should be listed in alphabetical order.**

Other Issues

Compounds

Quantitative biological data are required for all final/target compounds.

Page Charges

No page charges will be levied to authors.

Language Editing

Manuscripts submitted containing many English typographical errors will not be published.

Authors from non-English language countries are advised to use professional services prior to submitting their manuscript to the Journal.??

Proofs

Authors are sent page proofs. To avoid delays in publication, proofs should be checked immediately for typographical errors and returned within 48 hours. Authors will be charged for excessive changes made at the page proof stage.

Reprints

Each first named author will receive by e-mail a free copy of their article as a PDF file. The PDF file is a watermarked version of the published article which is exclusively for the author's own use and may not be copied or distributed. Reprints may be ordered from the Publisher prior to publication of the article.

Reviewing and Promptness of Publication

All papers submitted for publication will be immediately subjected to editorial scrutiny, usually in consultation with members of the Editorial Board. Every effort will be made to assess the papers quickly. The papers will be typeset and the proofs dispatched to the authors normally within 4 weeks of their acceptance.

Paper Submission

Paper submission starts at May 1st, 2009, through online submission system: Paper Submission. Please register the system and the conference firstly, and submit your paper following the guidance.